



# ATHLETICS EQUIPMENT

**DISCOVER OUR COMPREHENSIVE  
RANGE OF ATHLETICS EQUIPMENT!**

AFN offers a diverse selection of athletics equipment. Discover our range of meticulously designed gear crafted to enhance your performance and unlock your full potential on the track.



+603 3291 8505



[sales.afn@afnsports.com](mailto:sales.afn@afnsports.com)



[www.afnsports.com.my](http://www.afnsports.com.my)





# CONTENT

## Track & Field

1 - 8

## High Jump & Pole Vault

9 - 13

## Hammer, Discus, Shot Put & Javelin

14 - 20

## Long Jump & Triple Jump

21 - 26



+603 3291 8505



[sales.afn@afnsports.com](mailto:sales.afn@afnsports.com)



[www.afnsports.com.my](http://www.afnsports.com.my)



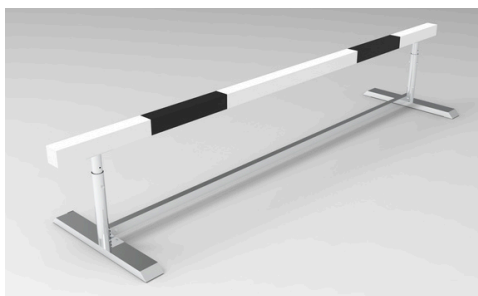
# TRACK & FIELD

Our range of track and field products is designed to meet the highest standards of performance and durability. From precision-engineered starting blocks to high-quality hurdles, each item is crafted to enhance athletes' training and competition experiences. Our products are suitable for various levels of use, from school sports programs to professional athletics, ensuring that every athlete has access to the best equipment available.





# PRODUCT VARIATION



## STEEPLECHASE HURDLE SYNTHETIC

- Made with a combination of synthetic material and an integrated aluminium core.
- The surface is more resistant to the puncture of the spike shoes, and it will not destroy the structure of the material.
- The height can be adjusted, and it is WA certified. Available in 2 options:

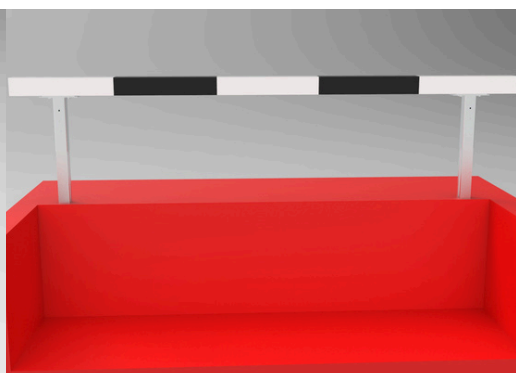
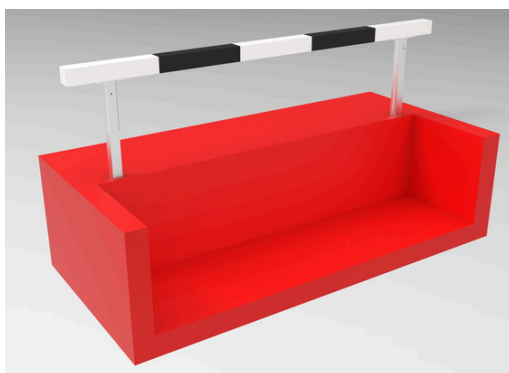
Length - 3.96m		Length - 5.00m	
Item Code	Options	Item Code	Options
FG10370SY FG10370SYSET	With Base Support	FG10370SY5M FG10370SY5MSET	With Base Support
FG10390SY FG10390SYSET	Without Base Support	FG10390SY5M FG10390SY5MSET	Without Base Support

\*1 set of order comes with 4 pcs of hurdle.

## PRODUCT PROFILE

Adjusted Height at : 76.20cm for women  
: 91.40cm for men

Crossbar Measurement : 12.70cm  
Total Weight : 90kg



## WATER DITCH HURDLE SYNTHETIC

Individual Item Code: FG10410SY

- Made with a combination of synthetic material and an integrated aluminium core.
- The height can be adjusted, and it is WA certified.

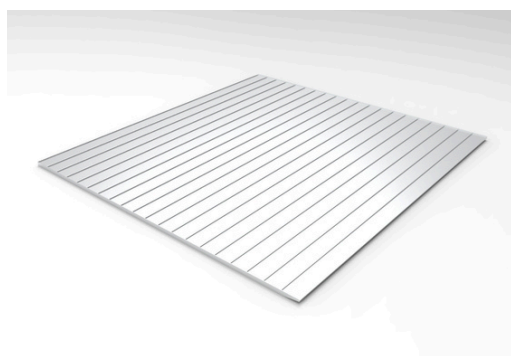
## PRODUCT PROFILE

Adjusted Height at : 76.20cm for women  
: 91.40cm for men

Crossbar Measurement : 12.70cm  
Total Length : 3.66m



# PRODUCT VARIATION



## WATER DITCH COVERING WITH RIM

Individual Item Code: FG10270

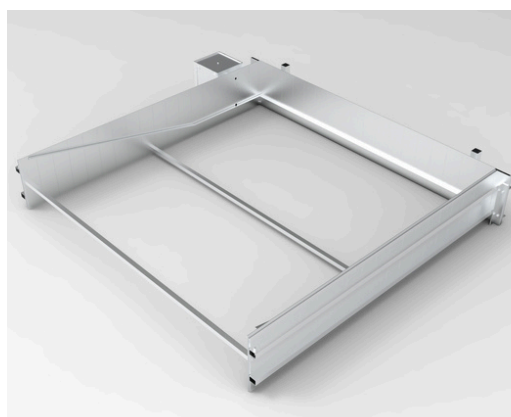
- Made from heavy-duty aluminium profiles.
- The cover parts are connected with tongue and groove joints.
- The rim allows the cover to blend with the surrounding area.



## UNDERFRAME FOR WATER DITCH COVER

Individual Item Code: FG10310

- Made from aluminium.
- Supports and holds the water ditch cover in place.
- All parts can be adjusted horizontally and vertically according to the site condition.



## WATER DITCH KIT, SUPPLY SHAFT - RIGHT SIDE



Individual Item Code: FG10285R

- WA certified and made from extra sturdy aluminium profiles.
- Adjustable angle to match the thickness of the installed flooring system.
- Crossbars ensure correct alignment of the entire water ditch.
- Includes a housing for the water valve to regulate the water level.



## STANDARD GROUND SOCKET FOR WATER DITCH HURDLE

Individual Item Code: FG10330

- Made from aluminium and designed to fit the square hollow profile of the hurdle.
- Features a soil compartment and can be welded to the kit when ordered together.

### PRODUCT PROFILE

Dimension : 80mm x 80mm x 350mm  
Total Length : 400mm



# PRODUCT VARIATION



## COMPETITION HURDLE

Individual Item Code : FG10470

- Made from high grade aluminium profiles and is WA certified.
- The crossbar is made from high quality, durable and extremely flexible wood.
- The height can be adjusted, and the scale is placed in a groove.



### PRODUCT PROFILE

Adjustable Height at : 68.50cm | 76.20cm | 83.80cm  
: 91.40cm | 99.10cm | 106.70cm



## COMPETITION HURDLE ECO

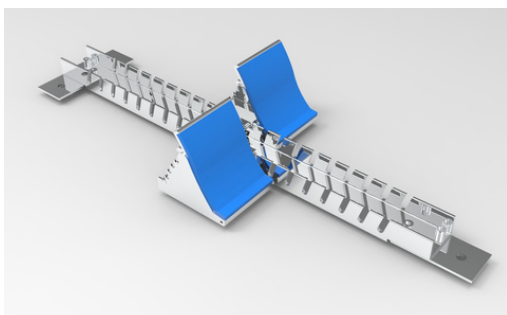
Individual Item Code : FG10475

- Made from high grade aluminium profiles and is WA certified.
- The crossbar is made from high quality, durable and extremely flexible wood.
- The height can be adjusted, and the scale is placed in a groove.



### PRODUCT PROFILE

Adjustable Height at : 68.50cm | 76.20cm | 83.80cm  
: 91.40cm | 99.10cm | 106.70cm



## COMPETITION STARTING BLOCK

Individual Item Code: FG10550

- WA certified and it's made from aluminium.
- The block is fixed to the ground with spikes.
- The steps are covered with rubber and the angle is adjustable.



## RUNNING TRACK SIGNS

Individual Item Code:

FG10790 (8 lanes - 245pcs)

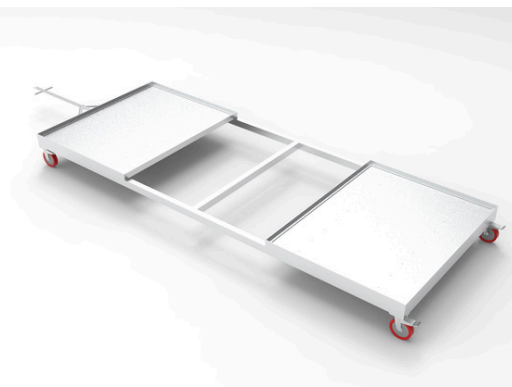
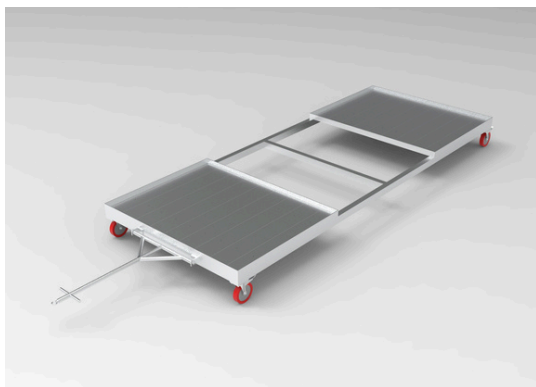
FG10810 (6 lanes - 195pcs)

FG10812 (9 lanes - 207pcs)

- Made from aluminium and all signs are coloured based on PA regulations.
- The set consists of all required signs for all WA certified events.



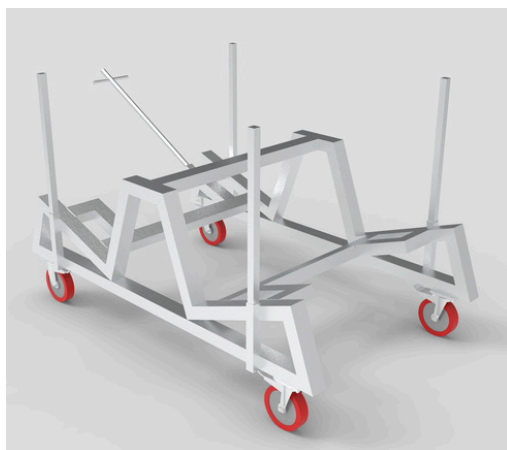
# PRODUCT VARIATION



## TRANSPORT TROLLEY FOR STEEPLECHASE HURDLE

Individual Item Code: FG10400

- It is made from extra strong aluminium profiles.
- Used to store and move the steeplechase hurdles.
- Provides space for one set of hurdles (4 pcs).
- Equipped with 200mm wheels, allowing the trolley to move easily on the track.



## TRANSPORT TROLLEY FOR 20 HURDLES

Individual Item Code: FG10520

- It is made from special aluminium profiles.
- Provides place for up to 20 hurdles.
- It is a side loading model.



## TRANSPORT TROLLEY FOR STARTING BLOCK

Individual Item Code: FG10570

- It is made from aluminium.
- Provides space for a multiple starting blocks.
- The trolley is equipped with wheels, allowing easy handling of the stored starting blocks.



# PRODUCT VARIATION



## LAP INDICATOR WITH BRASS BELL

Individual Item Code: FG10160

- Made from aluminium.
- It displays the numbers of laps remaining.
- The brass bell can be rung to indicate the last lap.
- Available in the colour selections below:

Colour : ● ● ● ● ●



## STARTER PODIUM WITH DISPLAY BOARD

Individual Item Code: FG10181

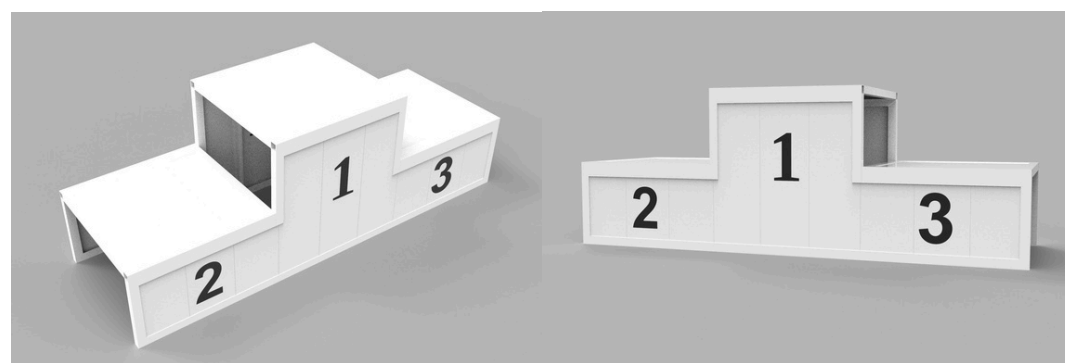
- It is made from aluminium.
- The base platform is made from a special double square hollow, round edges profile with an anti-slip surface.
- The podium is originally coated in blue. It also comes in a variety of colours.

### PRODUCT PROFILE

Height : 100cm

Dimension : 40mm x 3mm

Colour : ● ● ● ● ●



## TEAM WINNER PODIUM WITH NUMBERED 1, 2, 3

Individual Item Code: FG10241

- It is made from special aluminum profiles and it is coated.
- Available in variety of colours.

### PRODUCT PROFILE

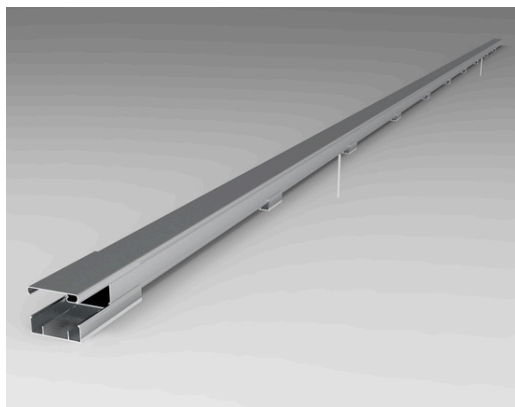
Length : 240cm

Steps Height : 50cm

Width : 80cm

Colour : ● ● ● ● ●

# PRODUCT VARIATION



## ALUMINIUM CURBING

- Made from special aluminium profiles.
- Serves as a mobile marker and separator for the running track.

### PRODUCT PROFILE

Length : 5m/pcs  
Curbing Width : 60mm

Curbing Radius : 36.5m  
Curbing High : 50mm

Individual Item Code	Options	Individual Item Code	Options
FG11251	Straight - 34 pcs	FG11252	Curved - 46 pcs

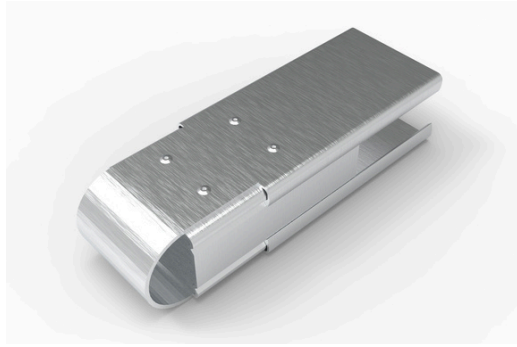
Note : Custom cutting lengths and radius options compliant with WA regulations are available upon request.

If you're interested in purchasing our aluminum curbing for running tracks, they are available as a complete set with the following piece count and measurements. Customized sizes and quantity are also available to meet your specific needs.

Item Code	Set Comes With...	Quantity
FG11260SET	Straight Curbing Curved Curbing Base cover 120mm Top cover 120mm Base cover with hole 60mm Base cover without hole 60mm 6mm Stainless steel pin Aluminium Socket for Stainless Steel Pin	34 pcs 46 pcs 90 pcs 90 pcs 250 pcs 500 pcs 250 pcs 250 pcs
FG11260 SETCUSTOM	Customizable as per request	/



# PRODUCT VARIATION



## END CAP ALUMINIUM CURBING

Individual Item Code: FG11265

- Made from special aluminium profiles.
- This cap is used to open ends of the aluminium curbing.



## STARTING BOXES WITH FRP SYSTEMS

Individual Item Code: FG10580

- It is made from fibreglass-reinforced plastic.
- The boxes are stackable and include space for false start indicators.



## RELAY RODS

Individual Item Code : FG10780

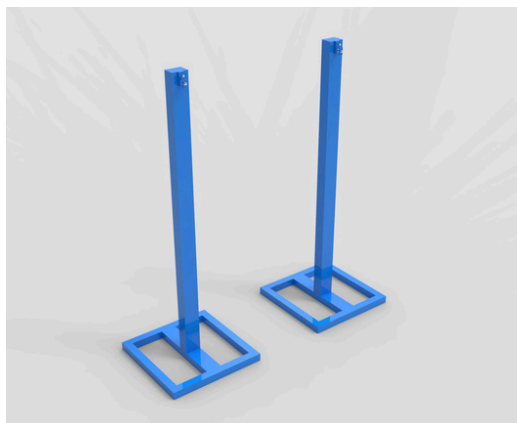
Item Code : FG10780SET (8pcs)

- Lightweight and durable.
- Provide a comfortable grip.
- Available in different colours.

### PRODUCT PROFILE

Diameter : 4cm

Lengths : 30cm



## FINISHING POST

Item Code : FG10200 (pair)

- It is made from aluminium.
- The post features a square base frame.
- It includes a mechanism to hold the finishing line.
- Available in the colour selections below:

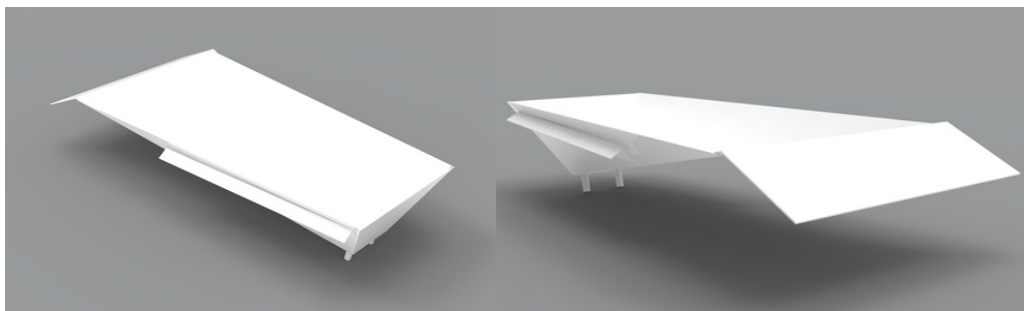
Colour : ● ● ● ● ●

# HIGH JUMP & POLE VAULT

Constructed from 6063-T5 grade aluminum, our pole vault and high jump equipment epitomize durability and precision engineering. Designed for professional performance, they ensure stability and reliability, enhancing the intensity of every competition.



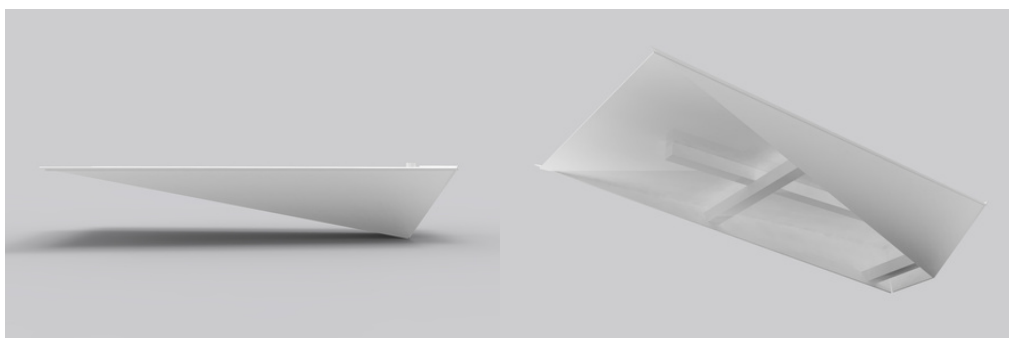
# PRODUCT VARIATION



## POLE VAULT BOX

Individual Item Code: FG20290

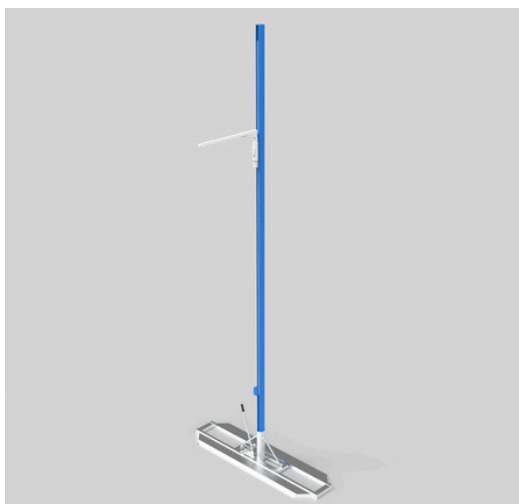
- WA certified, the stainless steel box has a trapezoidal shape.
- The part towards the mat is reinforced to handle the pole's load.
- It includes a drainage system to remove excess water.



## POLE VAULT INLAY

Individual Item Code: FG20310

- WA certified and made from aluminium.
- Matches and closes the pole vault box when not in use.
- Essential for runway areas shared with opposite pole vault facilities.
- The cover is delivered without rubber and can be coated on site.



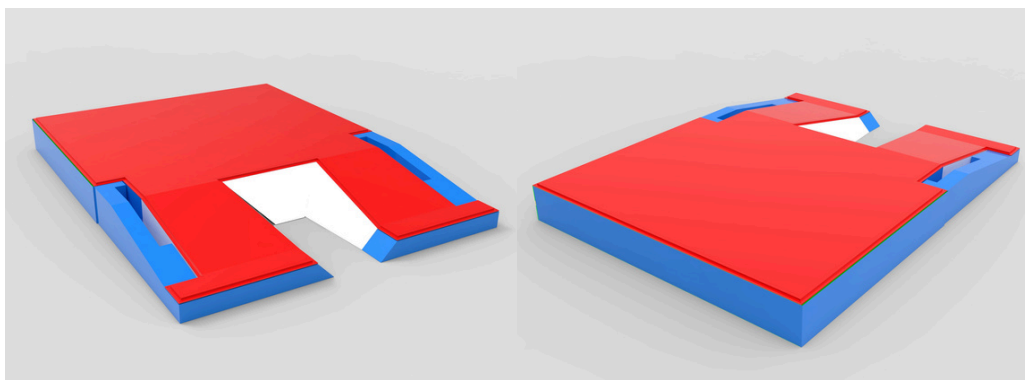
## WGR POLE VAULT STAND FREE STANDING & ADJUSTABLE



Individual Item Code: FG20010WGR

- WA certified and made from high-grade aluminium profiles.
- Sturdy design ensures easy handling and stability.
- Crossbar height can be adjusted from 1.8m to 6.5m with built-in mechanisms.
- Uprights can be locked with a brake, ensure final height adjustments on site.

# PRODUCT VARIATION



## POLE VAULT MAT COMPETITION (H)

Individual Item Code: FG20080

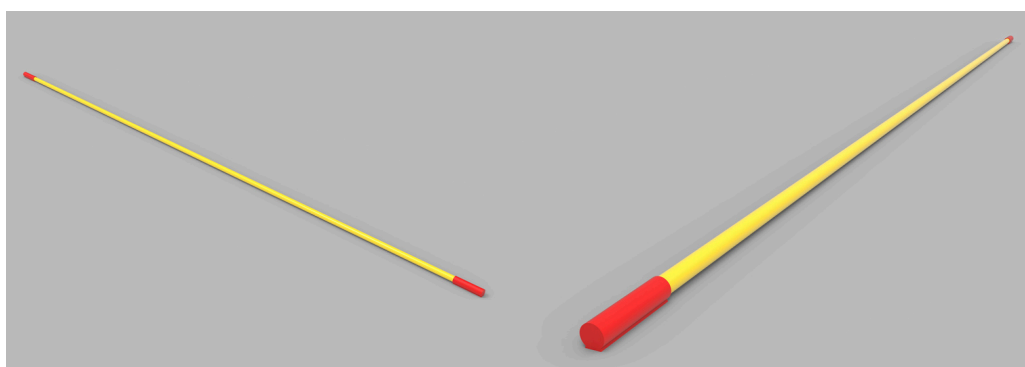
- WA certified and made from PU foam.
- The mat is covered in weatherproof and spike-proof material, with an additional wear and tear layer on top.
- Its hollow chamber design provides high elasticity and good air circulation.
- It includes a fully aluminum bar frame that raises the mat by 10cm to prevent water exposure.

Note : Customized sizes available upon request.

### PRODUCT PROFILE

Dimension : 8.0m x 6.0m x 0.9m

Colour :    



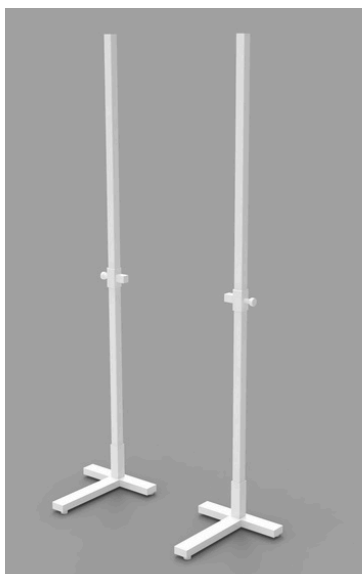
## CROSSBAR

- WA certified and is made from fiber glass
- It is equipped with plastic caps at the ends to sit on the upright supports.

High Jump Crossbar		Pole Vault Crossbar	
Item Code	Length	Item Code	Length
FG20350	4.0m	FG20130	4.5m



# PRODUCT VARIATION

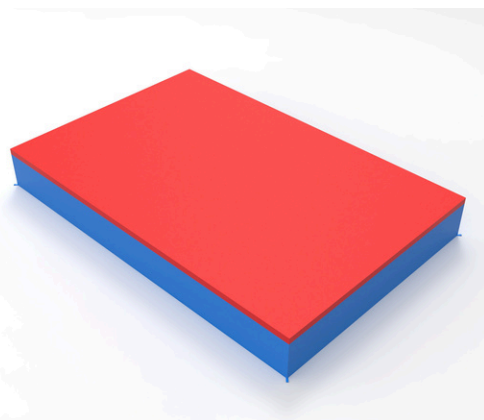
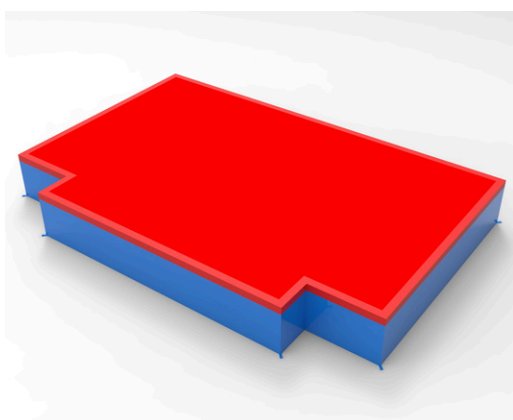


## HIGH JUMP STAND



Item Code	Height	Upright Measures	Height Adjustable
FG20510	2.5m	50mm x 50mm x 3mm	50cm to 250cm
FG20520	3.0m	50mm x 50mm x 3mm	50cm to 300cm

- WA certified and it is made from high grade aluminium profiles.
- All corners for this profile have round edges.
- All screws are made of stainless steel.



## HIGH JUMP MAT

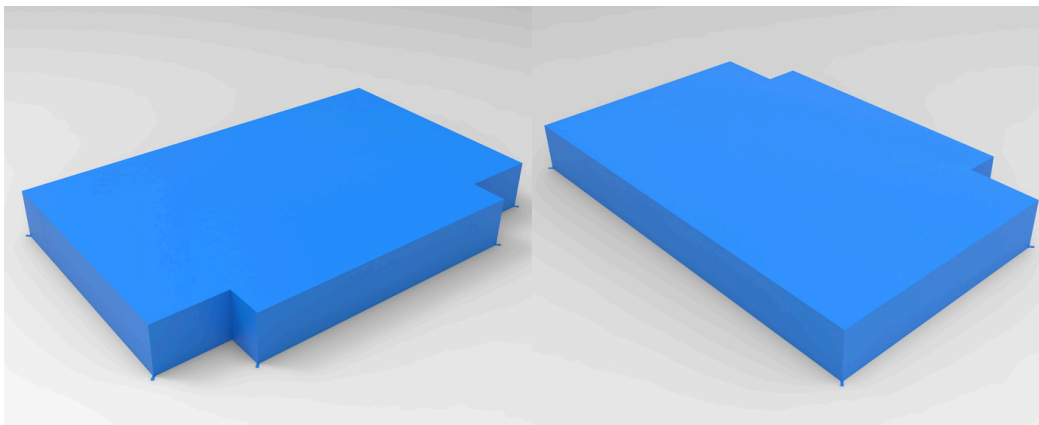
- WA certified and designed to fit upright stands in front of the corner.
- The layer is equipped with spike-proof material on both sides.
- It features a hollow chamber system for high elasticity and smooth air circulation which allows the athlete a safe landing.
- The modules are fully interchangeable with each other and the mat includes a rain cover and a full aluminium bar frame.
- Available in the colour selections below:

Colour : ● ● ● ●

Cut Off		Non-Cut Off	
Item Code	Dimension	Item Code	Dimension
FG20400CUTOFF	600cm x 400cm x 70cm	FG20400	600cm x 400cm x 70cm

Note : Customized sizes available upon request.

# PRODUCT VARIATION



## RAIN COVER FOR HIGH JUMP MAT CUT OFF

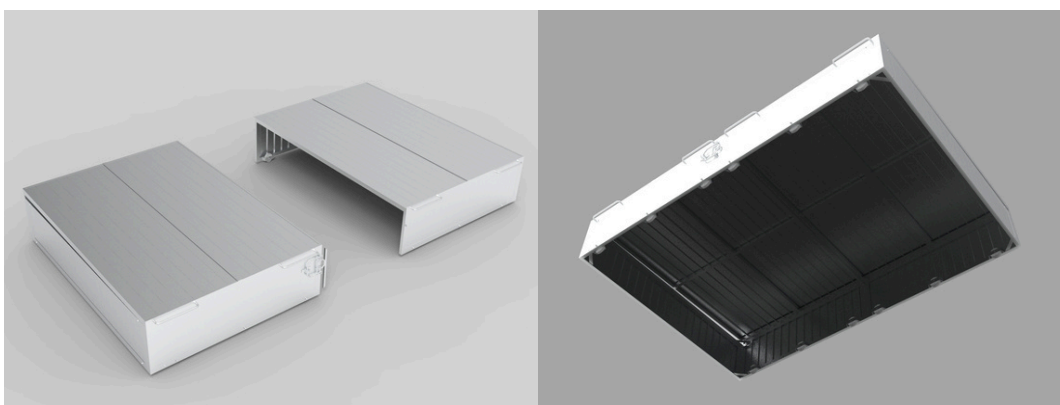
Individual Item Code: FG20500CUTOFF

- Made from water-proof PVC to prevent the mat from getting wet.
- Used for item code FG20400CUTOFF - High Jump Mat Cut-Off.
- The size can be customized to meet your specific preferences.

### PRODUCT PROFILE

Dimension : 6.0m x 4.0m x 0.7m

Colour :    



## MOBILE SAFETY COVER FOR HIGH JUMP MAT

Individual Item Code: FG24040

- This safety cover is made from extra-strong aluminium profiles, ensuring both durability and a lightweight design for easy handling.
- Slightly sloped top surface prevents water accumulation.
- Come with handles, making it easy to maneuver.
- Equipped with 200mm wheels to avoid track marks.
- This safety cover also comes with a parking rail.
- The size can be customized to meet your specific preferences.

### PRODUCT PROFILE

Dimension : 6.0m x 4.0m

Colour :     

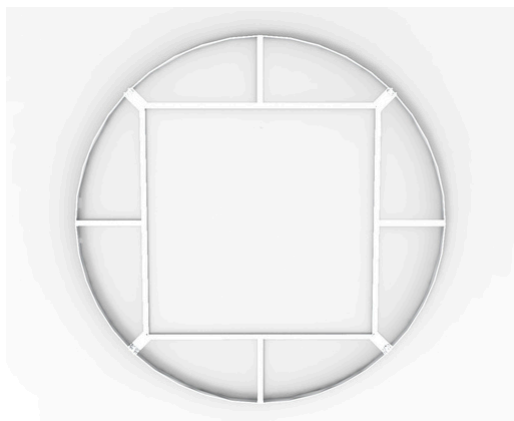




# HAMMER, DISCUS, SHOT PUT & JAVELIN

Constructed from 6063-T5 grade aluminum, our hammer, discus, shot put and javelin sports equipment epitomizes durability and precision engineering. Designed for professional performance, it ensures stability and reliability on the field, complementing the intensity of every game.

# PRODUCT VARIATION



## DISCUS RING DISMANTLE

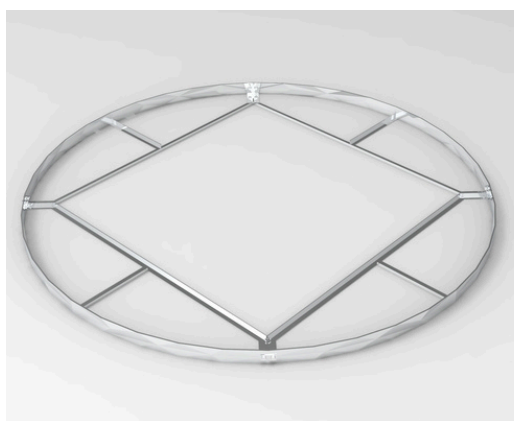
Individual Item Code: FG30220DS



- It can be dismantled to save space and prevent damage.

### PRODUCT PROFILE

Diameter : 2.50m



## SHOT PUT RING DISMANTLE

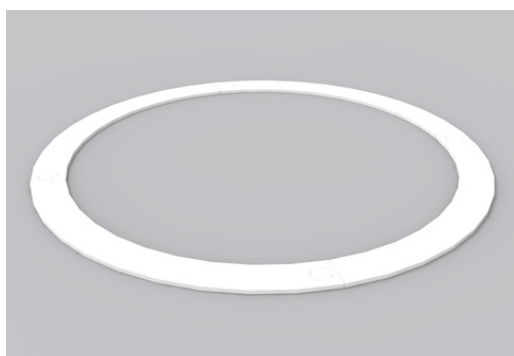
Individual Item Code: FG30210DS



- It is designed for space saving and easy transport.
- It can be dismantled to save space and prevent damage.

### PRODUCT PROFILE

Diameter : 2.135m

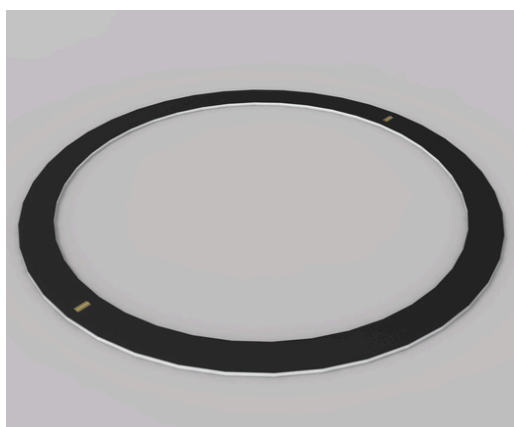


## HAMMER INLAY RING FIBER-GLASS

Individual Item Code: FG30140



- It is made from fiber-glass and consists of 4 elements.
- The inlay ring reduces the discus ring diameter for hammer events.



## HAMMER INLAY RING WOOD

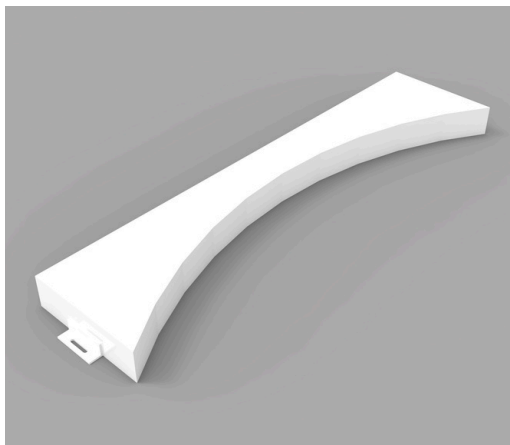
Individual Item Code: FG30150



- This two-section hammer throwing circle reduces the discus circle diameter to 2.135m.
- Made from weatherproof multiplex laminate with edges protected by special aluminium profiles.
- Hinges between the two sections are constructed from stainless steel.



# PRODUCT VARIATION



## SHOT PUT STOP BOARD SYNTHETIC



Individual Item Code: FG30440

- WA certified and made from synthetic material.
- It's arc-shaped design aligns with the inner edge of the shot put ring.
- It can be easily fixed to the ground with screws.



## JAVELIN STOP BOARD



Individual Item Code: FG30460

- Made from aluminium with a 7cm wide arc and an inside diameter of 8m.
- The stop board is secured by spikes on the bottom and marks the end of the runway.
- It complies with WA regulations.



## DISTANCE MARKER BOXES

- Made from fiberglass with a triangular shape and stackable design.
- It displays the number of the distance.

Item Code	Options	Details
FG31810	Set of 12 pieces	12m, 14m, 16m, 18m, 20m, 22m
FG31800	Set of 22 pieces	40m, 45m, 50m, 55m, 60m, 65m, 70m, 75m, 80m, 85m, 90m
FG31790	Individual unit	Choose your own distance

# PRODUCT VARIATION



## SHOT PUT RACK MOBILE

Individual Item Code: FG30350

- Made from aluminium with a sturdy construction welded in one-piece.
- The turning wheels improve handling and provides space for up to 10 shots.
- Available in the colour selections below:

Colour : ● ● ● ● ●



## DISCUS RACK MOBILE

Individual Item Code: FG30370

- Made from aluminium with a sturdy construction welded in one-piece.
- The turning wheels improve handling and provides space for up to 14 discuses.
- Available in the colour selections below:

Colour : ● ● ● ● ●



## JAVELIN RACK MOBILE

Individual Item Code: FG30390

- Made from aluminium with a sturdy construction welded in one-piece.
- The turning wheels improve handling and provides space for up to 15 javelins.
- Available in the colour selections below:

Colour : ● ● ● ● ●



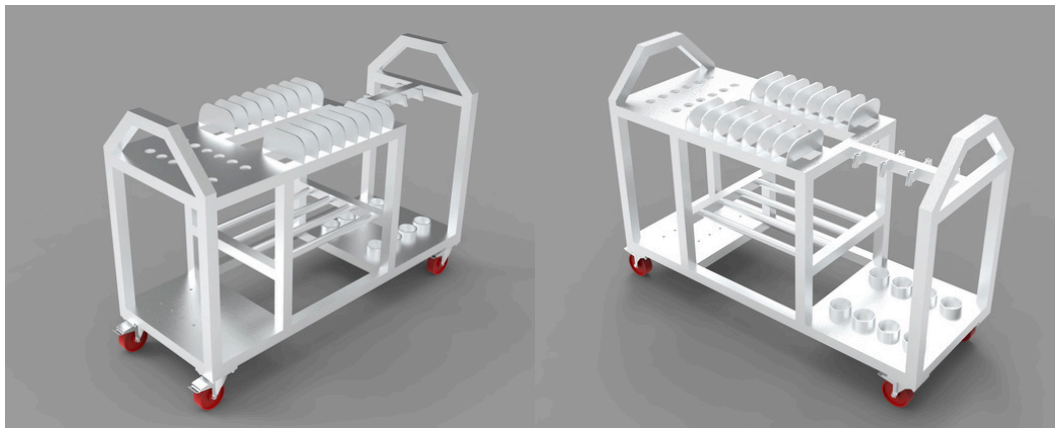
## HAMMER RACK MOBILE

Individual Item Code: FG30410

- Made from aluminium with a sturdy construction welded in one-piece.
- The turning wheels improve handling and provides space for up to 6 hammers.
- Available in the colour selections below:

Colour : ● ● ● ● ●

# PRODUCT VARIATION



## COMBINATION RACK MOBILE

Individual Item Code: FG30425

- Made from special aluminium profiles, equipped with two fixed and two swivelled castors.
- It offers space for approximately 12 javelins, 14 discus, 8 hammers, and 16 shot puts.
- Available in the colour selections below:

Colour : ● ● ● ● ●



## STANDARD GROUND SOCKET FOR DISCUS & HAMMER CAGE

Item Code	Cover Length	Insertion Length	Suitable for Cage
FG30090	550mm	500mm	FG30070
FG30100	850mm	800mm	FG30305

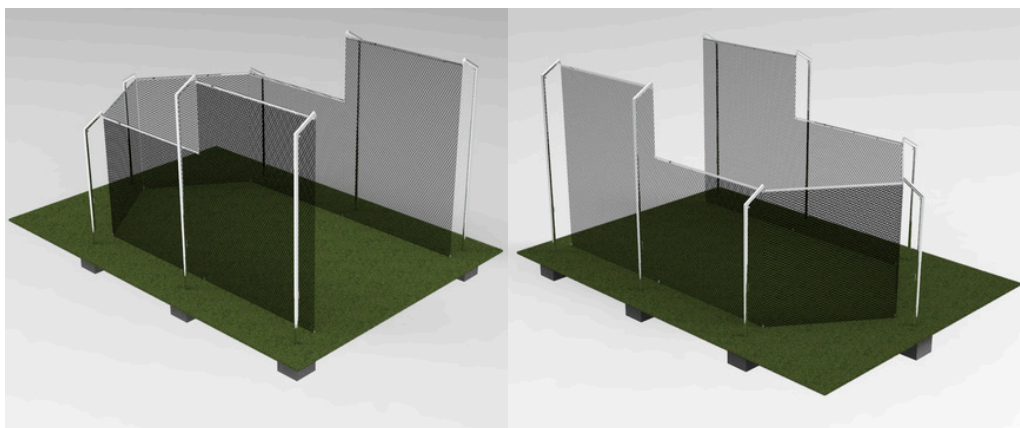
- Made from aluminium and designed to fit the oval profile of the cage, with a non-coatable cover.
- Equipped with a compartment to manage soiling without affecting the post height.

## PRODUCT PROFILE

Oval Profile : 120mm x 100mm



# PRODUCT VARIATION



## DISCUS CAGE MODEL 4M - 6M

Individual Item Code : FG30070 - Fully welded  
: FG30070DS - Dismantled

- Made from extra sturdy aluminum profiles.
- Posts equipped with hinge and spacers to keep the net in position.
- Complies with latest WA regulation.

### PRODUCT PROFILE

Mesh Width : 45mm

Wall Thickness of the Post : 3mm

Net Thickness : 5mm

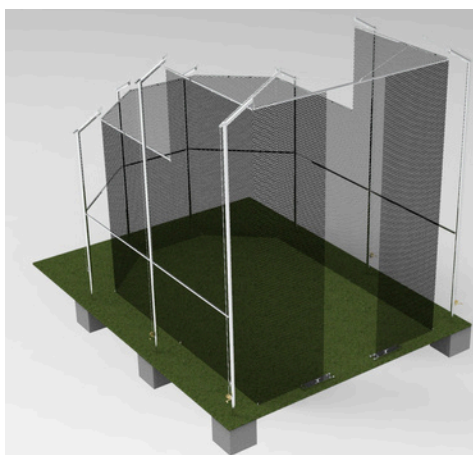
Post Cross Section : 120mm x 100mm

#### List of Loose Items

- FG30070ACCS01 : 6m post
- FG30070ACCS02 : 4m post
- FG30070ACCS03 : Crossbar for support on top length approx. 4.25m
- FG30070ACCS04 : Crossbar for support on top length approx. 3.713m
- FG30070ACCS05 : Ground anchor including eye bolt
- FG30070ACCS06 : Carabiner hook
- FG30070ACCS07 : Steel cable length approx. 2m for overhang crossbar
- FG30070ACCS08 : Net discus cage 6m - 4m including pull up devices
- FG30070ACCS09 : Fastening ropes
- FG30070ACCS10 : Steel cable for front post 6m

Please note that different discus and hammer cage comprises of different items. You're advised to contact our sales representative and ask for a detailed TDS for items included in your orders.

# PRODUCT VARIATION



## DISCUS & HAMMER CAGE 7M - 10M

Individual Item Code : FG30305 - Fully welded  
: FG30305DS - Dismantled

- Extra sturdy aluminum profiles and made to withstand wind speed up to 34m/s.
- Equipped with hinge and guide rail.
- Easy net position adjustment and installation.

### PRODUCT PROFILE

Mesh Width : 45mm

Wall Thickness of the Post : 6mm

Net Thickness : 5mm

Post Cross Section : 120mm x 100mm

#### List of Loose Items

- FG30305ACCS01 : 7m post  
FG30305ACCS02 : 10m post  
FG30305ACCS03 : 10m front post including fix equipment for guide rail  
FG30305ACCS04 : Nylon rollers  
FG30305ACCS05 : Ground anchor incl. eye bolt  
FG30305ACCS06 : Black safety net 4mm 45mm mesh  
FG30305ACCS07 : Fastening ropes  
FG30305ACCS08 : Carabiner hook  
FG30305ACCS09 : Movable weight for door opening  
FG30305ACCS10 : Support bar for post stability length approx. 4.25m  
FG30305ACCS11 : Support bar for post stability length approx. 2.90m  
FG30305ACCS12 : Crossbar for support the net on top length approx. 4.25m  
FG30305ACCS13 : Crossbar for support the net on top length approx. 2.90m  
FG30305ACCS14 : Guide rail for hammer cage 30305  
FG30305ACCS15 : Net for discus and hammer cage high 7m - 10m model 30305  
FG30305ACCS16 : Carabiner hook pull-up devices for discus and hammer cage net  
FG30305ACCS17 : Winch for hammer cage

Please note that different discus and hammer cage comprises of different items. You're advised to contact our sales representative and ask for a detailed TDS for items included in your orders.



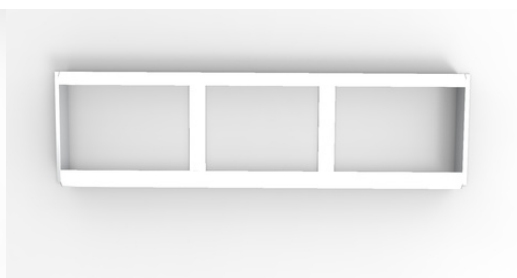
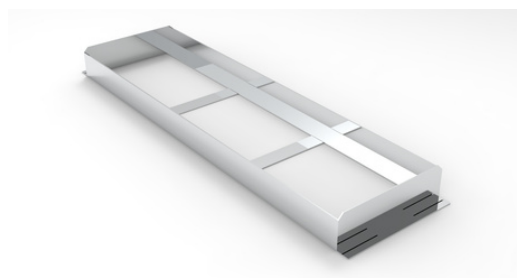
# LONG JUMP & TRIPLE JUMP

Constructed from 6063-T5 grade aluminum, our long jump and triple jump sports equipment is designed to meet the highest standards of performance and durability. It is ideal for athletes of all levels, helping them to achieve their best results.





# PRODUCT VARIATION



## INSTALLATION THROUGH FOR TAKE-OFF BOARD

- WA certified and made from aluminium.
- Tray installation allows synthetic material to fit flush with the boards, preventing spikes from catching on metal.
- Includes a distance board to maintain the shape of the through during installation.
- The installation through profile is cut approximately 13mm lower on both of the long sides.

Item Code	Length	Item Code	Length
FG40040	122cm x 34cm x 10cm	FG40030	122cm x 30cm x 10cm



## TAKE-OFF BOARD ALUMINIUM & SYNTHETIC

- WA certified and made from an aluminum core with a synthetic finish.
- Equipped with stainless steel bolts for vertical adjustment and horizontal securing to prevent movement.
- Take-off area is replaceable, and the board can be locked in place to maintain its position.

Item Code	Length	Item Code	Length
FG40155	122cm x 34cm x 10cm	FG40155SY30	122cm x 30cm x 10cm

If the take-off board is worn and requires replacement, the replacement take-off area measures 200mm x 1220mm x 15mm.

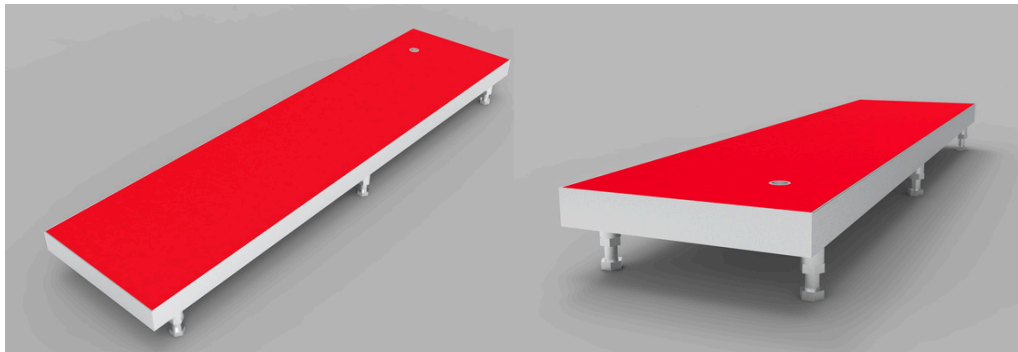
# PRODUCT VARIATION



## BLANKING BEAM WITHOUT RUBBER

- WA certified and made from aluminium.
- Adjustable height with 6 stainless steel screws.
- Delivered without rubber and can be covered on site.

Item Code	Length	Item Code	Length
FG40010	122cm x 34cm x 10cm	FG40020	122cm x 30cm x 10cm

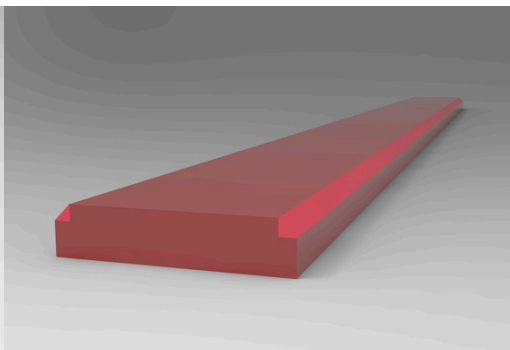
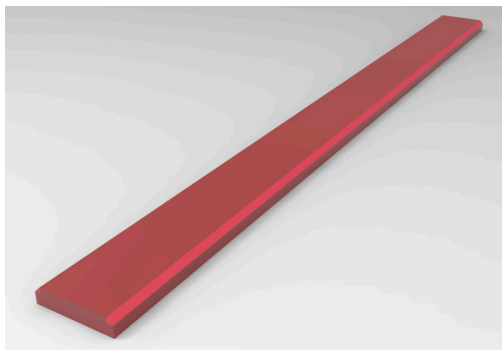


## BLANKING BEAM WITH RUBBER

- WA certified and made from aluminium.
- Adjustable height with 6 stainless steel screws.
- Delivered with a rubber covering.

Item Code	Length	Item Code	Length
FG40290	122cm x 34cm x 10cm	FG40300	122cm x 30cm x 10cm

# PRODUCT VARIATION



## CONTROL STRIP

Individual Item Code : FG40090

: FG40110 (Plasticine for Control Strip)

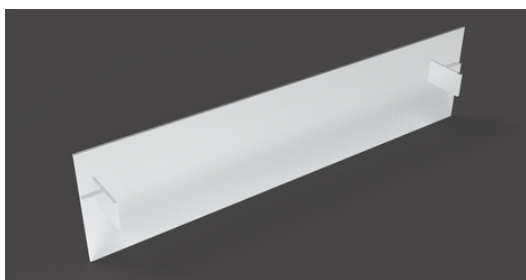
- Made from synthetic material on an aluminium base.
- Provides space for plasticine inlays of equal thickness on each side.
- Allow exact setting of the 45-degree angle required by WA regulations.



## ALUMINIUM SAND TRAP ECO

Individual Item Code: FG40430

- Made from special aluminum profiles with aluminum grates and a honeycomb rubber mat.
- Can be installed as a single or double row.
- No aluminium base, concrete must be installed at the site.



## END CAP FOR ALUMINIUM SAND TRAP

Individual Item Code: FG40440

- End cap for aluminium sand trap.

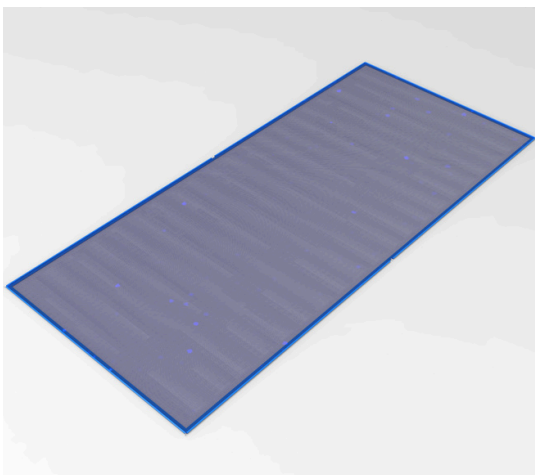
---

### PRODUCT PROFILE

Length : 100cm      Width : 50cm



# PRODUCT VARIATION

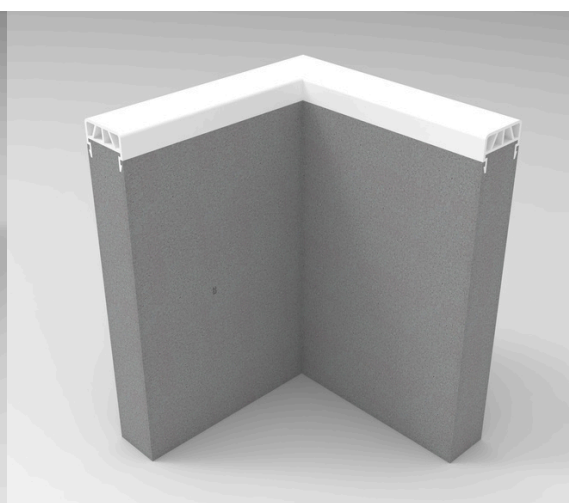
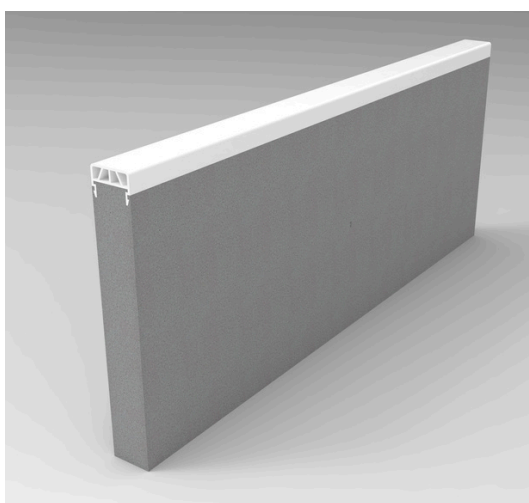


## SAND PIT COVER

Individual Item Code: FG40180

- Made from PVC-coated netting fibre and is spike-proof.
- It features a chain link seam for added durability and it weighs approximately 400g/sqm.
- It is custom-made to fit the exact size of the sand pit for optimal coverage.
- Available in the colour selections below:

Colour : ● ● ●



## ELASTIC CURBING COATED WHITE

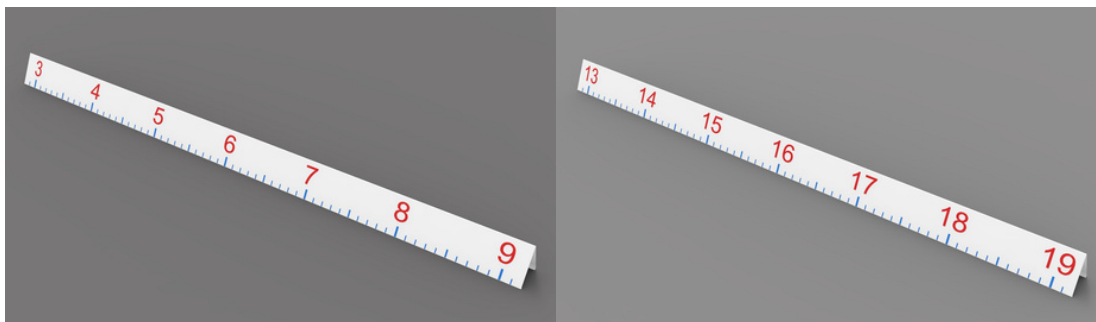
- The elastic curbing with rubber padding is used as boundary for jumping pits and sand pits.
- It is made from concrete with EPDM rubber padding.
- The material is temperature-resistant from -30°C to >100°C.

### PRODUCT PROFILE

Width : 60mm      Height : 30mm

Item Code	Dimension	Item Code	Dimension
FG40350WH (straight)	100cm x 6cm x 40cm	FG40380WH (corner)	30cm x 6cm x 30cm

# PRODUCT VARIATION



## MEASURING BOARD

- Made from white powder-coated aluminium.
- Weatherproof panels equipped with stripes on both sides.
- Delivered in 3 sections for easy transport and storage purposes.

Item Code	Options	Measurement
FG40190	Long Jump Measuring Board	3m - 9m
FG40200	Triple Jump Measuring Board	13m - 19m

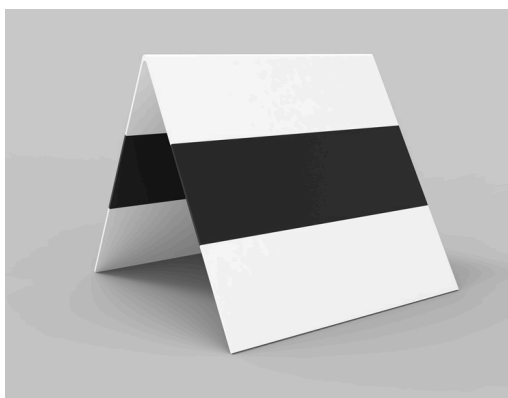


## RUN UP MARKERS

Individual Item Code: FG40220

- Made from a single piece of welded aluminium.
- Used to mark the starting point for the run up.
- Available in the colour selections below:

Colour : ● ● ● ● ●



## TAKE-OFF MARKER

Individual Item Code: FG40210

- Made from aluminium and coated in white and black.
- The marker indicates the athlete's take-off point.



# NEED MORE INFORMATION?

## CONTACT US!



+603 3291 8505



[sales.afn@afnsports.com](mailto:sales.afn@afnsports.com)



[www.afnsports.com.my](http://www.afnsports.com.my)



No.16, Jalan SKI 1/KU7,  
Sungai Kapar Indah, 42200  
Kapar, Selangor, Malaysia.

Please note that all customizations request are available upon approval and subject to a minimum order quantity.