

Laykold® PADEL COURTS

🔍 Take a closer look. _____

- Made from 80% aluminium frames for lighter and easier installation
- Aluminium is 95% recyclable and rust-free
- Includes Australian made Laykold Padel Turf Pro made from 100% Australian made yarn
- Backed by up to 10-year Manufacturer's Warranty

APT ADVANCED
POLYMER
TECHNOLOGY



Laykold®
OFFICIAL COURT SURFACE OF THE
US OPEN

Padel is Booming - 25 Million Players and Counting

Padel is one of the world's fastest-growing sports, with over 25 million players across 90 countries - and Australia is quickly joining the movement.



Why choose Laykold Padel Courts?

Whether you're building a club facility, hosting a temporary activation, or adding value to a community space - Laykold Padel delivers professional-grade courts built for growth, performance and longevity.

- **80% aluminium frame**
for lighter, faster and easier installation compared to steel
- **Certified to Australian Structural & Safety Standards**
for indoor and outdoor use*
- **Rust-free and 95% recyclable**
aluminium for long-lasting sustainability
- **Laykold Padel Turf Pro**
featuring 100% Australian-made yarn, developed specifically for local conditions
- **Backed by up to 10-year manufacturer's warranty**
- **Door-to-door delivery**
available throughout Australia and New Zealand
- **Supported by a nationwide network**
of trusted installation experts

*Laykold Padel Flex is designed for temporary use and Safety compliance is dependent on variables such as location and length of install.



“Laykold offers a premium product, backed by the world's largest sports surfaces company, so while the upfront cost might be higher than some other suppliers, you're getting a court that will last longer and require less maintenance”

Matty Thomas, Padel Coach
and Former #1 Australian Player.



Laykold Padel Panoramic Court built by Synthetic Padel Group

Laykold Padel Courts - Build with Confidence.

Laykold is the world's leading name in racket sport courts - trusted on the global stage and now available for padel.

As the Official Court Surface of the US Open, Laykold is renowned for delivering elite-level performance across a wide range of sports including tennis, basketball, netball, futsal, pickleball and volleyball.

Now, with Laykold Padel Courts, you can bring that same world-class quality to your venue.

Laykold Padel Courts are proudly available through APT Asia Pacific, based in Melbourne - Australia's leading AS/NZ ISO 9001:2015 certified manufacturer of synthetic sports surfaces. APT's products have been trusted for Olympic Games, World Cups and Diamond League events, making them the surface partner of choice for premier sporting venues worldwide.

Tested, Certified, Trusted—Made for Australian Conditions

Laykold Padel Classic and Panoramic Courts are compliant with the key Australian Structural and Safety Standards—delivering peace of mind for players, councils, clubs, and insurers. These permanent court systems are engineered for performance and durability in outdoor environments, with certification covering:

Wind Resistance & Structural Integrity

Designed to withstand wind speeds up to 180 km/h, compliant with AS/NZS 1170.2:2021 and suitable for wind classifications up to N5 and C3 in line with AS 4055.

Material Strength & Durability

Constructed using high-grade aluminium (6061-T6, 6063-T5) and galvanised steel (S275 grade), fully compliant with relevant Australian standards.

Glass Safety Compliance

Fitted with 12mm thick Grade A safety glass, certified to AS 1288:2021 and AS 2208:2006 for maximum safety and clarity.

Why Certification Matters

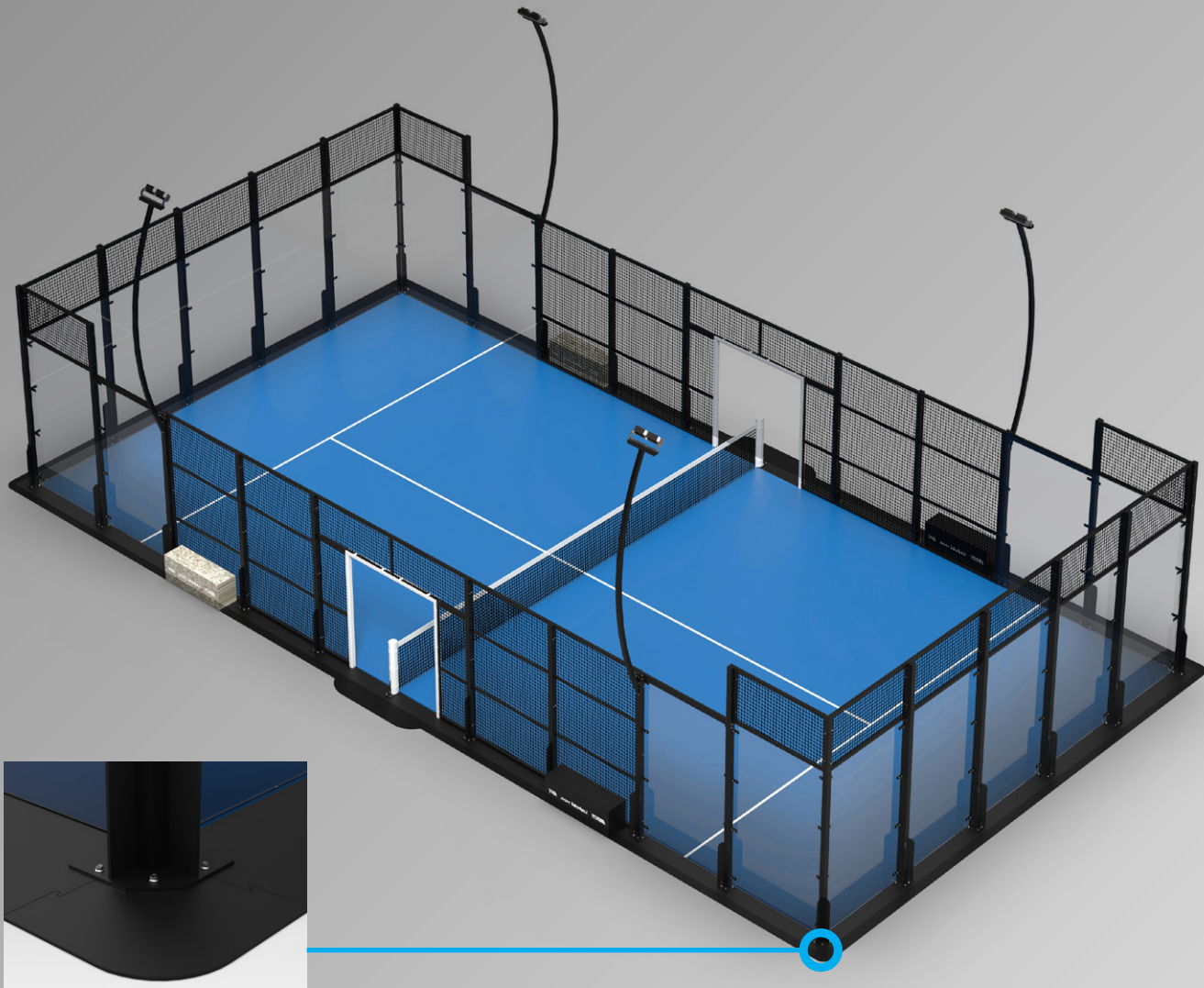
Australia's harsh and unpredictable climate demands more from your court. Laykold Padel's certified systems are purpose-built for local conditions, offering:

- ✓ Full compliance with Australian building codes
- ✓ Lower maintenance needs and liability risks
- ✓ Confidence for councils, clubs, and insurers

For full details on approved certifications, please contact us. Please note that all installed courts require a separate site-specific engineering certificate, which remains the responsibility of the client.

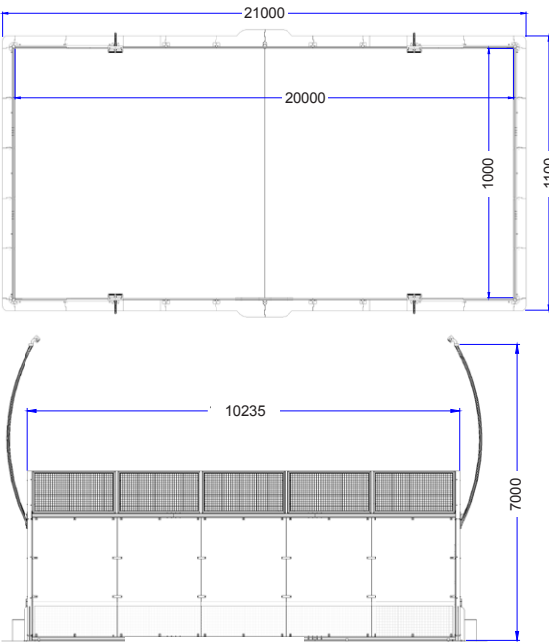
The Laykold Padel Court range

6



FLEX

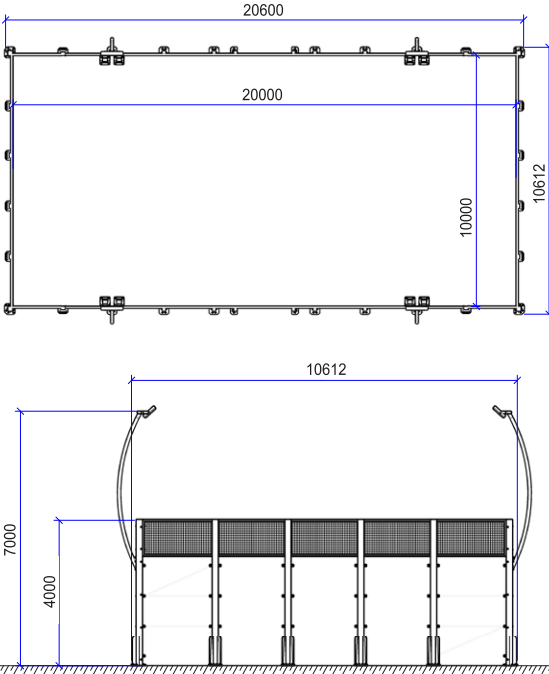
A versatile, non-permanent court solution ideal for events, tournaments, exhibitions, or those still exploring the padel market. The Laykold Padel Flex Court features a smart modular design with a steel perimeter ring that allows secure installation on hard court surfaces, but leaves minimal impact upon removal. It is suitable for short-medium use indoors and short-term use outdoors.* Built for performance and durability, the court includes high-impact tempered glass panels supported by a sturdy aluminium frame and mesh fencing. It's finished with Laykold's premium Padel Turf Pro, offering excellent playability and consistency.



*Outdoor suitability and length of install may vary based on location. Please consult with your court builder or engineer for advice.

CLASSIC

The Laykold Padel Classic Court offers an ideal solution for those wanting a high-quality, permanent court system. Designed for both indoor and outdoor use, it is certified to all relevant Australian Safety Standards and built for long-term performance. The court features a robust 10mm aluminium base plate that is securely anchored to the ground, ensuring stability and durability. Constructed with high-impact tempered glass, a strong aluminium frame, and reinforced mesh panels, the Classic Court is finished with Laykold's exclusive Padel Turf Pro-engineered with 100% Australian-made yarn for exceptional playability and resilience.

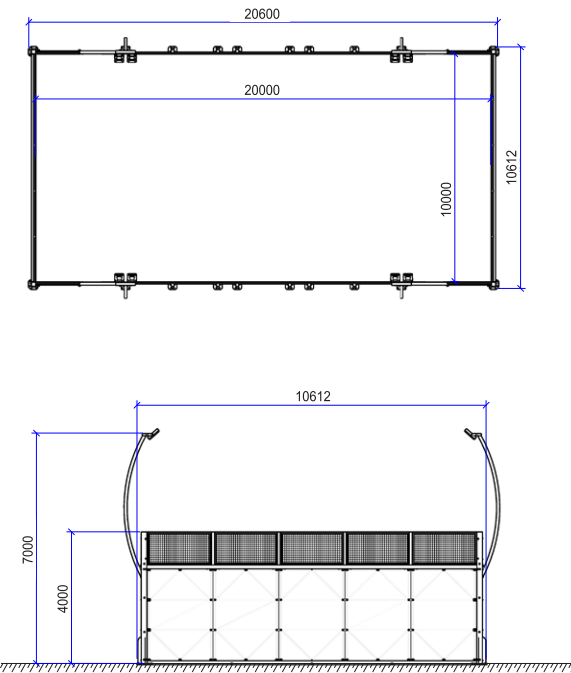


7



PANORAMIC

The Laykold Padel Panoramic Court is the ultimate in padel court design, delivering a premium experience for players and spectators alike. With seamless glass walls at both ends, it offers unobstructed views that capture every moment of the action—perfect for high-profile venues, events, or clubs looking to elevate their offering. Certified to Australian Safety Standards for indoor and outdoor use, the Panoramic Court is crafted with high-impact tempered glass and supported by a reinforced aluminium frame and mesh panels. Finished with Laykold’s exclusive Padel Turf Pro, made for elite-level play, the Panoramic Court sets a new standard in performance and aesthetics.



Laykold Padel Court Features

	Flex	Classic	Panoramic
Suitable for permanent indoor use		●	●
Suitable for permanent for outdoor use		●	●
Suitable for temporary indoor/outdoor use	●		
Certified to Australian Structural & Safety Standards		●	●
12mm tempered safety glass	●	●	●
Seamless glass walls at ends of court			●
Aluminium base plate thickness	5mm	10mm	10mm
Features 5mm steel perimeter ring	●		
Made from 80% aluminium frame and mesh panels	●	●	●
100% recyclable Laykold Padel Turf Pro	●	●	●
4 light posts, 8 LED lights	●	●	●
10m wide padel net	●	●	●
Padding for perimeter of court access points and net posts	●	●	●

Take a closer look

COURT FRAME

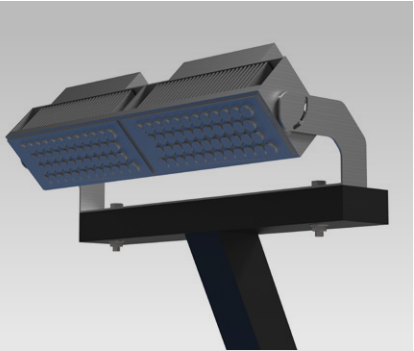
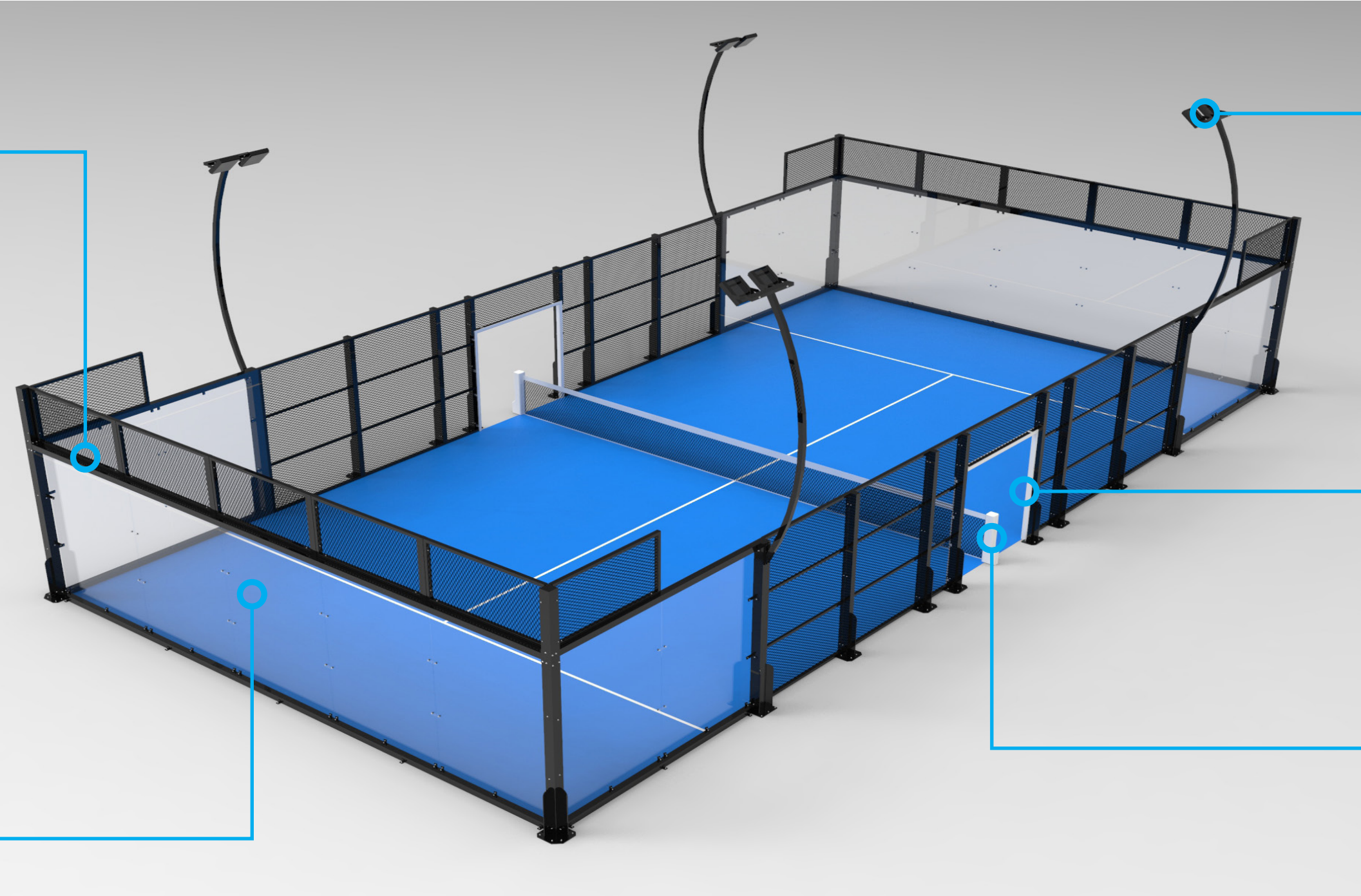
While there are some small variations to the design of the Laykold Padel Court frames all padel courts are required to include rebounding ends (with fencing above) measuring 4m in height and two central court access points (one on each side) for out-of-court play. All Laykold Padel Court frames are:

- Made from 80% aluminium frames for lighter and easier installation
- 95% recyclable and rust-free (aluminium)
- Inclusive of base plate, posts, mesh frames and brackets
- Coated in black polyurethane which meets the Green Buildings Standard.
- Inclusive of 12mm tempered safety glass with countersunk holes for installation.

LAYKOLD PADEL TURF PRO

The Laykold Padel Turf Pro court surface measures 20m long x 10m wide and is marked with two service lines and a centre line.

- Made in Australia using 100% Australian-made yarn for superior durability and UV stability
- 12mm in height with texturised monofilament yarn
- Backed with a proprietary hybrid emulsion secondary coating for superior tuft lock
- Slip and glare-resistant
- Available in blue, green and red. Custom colours available upon request.



LIGHTING

- Four 7m tall black aluminium light posts available as curved or straight
- Eight ExeLux FL140 200W LED lights (two per post) designed specifically for padel courts to provide high visibility, court uniformity, reduced light spill and low energy consumption.

ACCESSORIES

- One 10m wide x 0.92m high net with two aluminium posts.
- Padding for perimeter of court access points and net posts. Padding is made from PE foam encased in a durable PVC canvas and is available in a selection of colours.
- Other accessories are available upon request.

Laykold®

Court Sports



NETBALL

PADEL

TENNIS

PICKLEBALL

GYMSPORTS

For more information contact

AUSTRALIA / NZ

1300 633 155

info@aptasiapacific.com.au

ASIA

+61 407 035 451

enquiry@laykoldasia.com

Laykold®
OFFICIAL COURT SURFACE OF THE
US OPEN

LAYKOLD.COM
APTASIAPACIFIC.COM.AU

APT ADVANCED
POLYMER
TECHNOLOGY